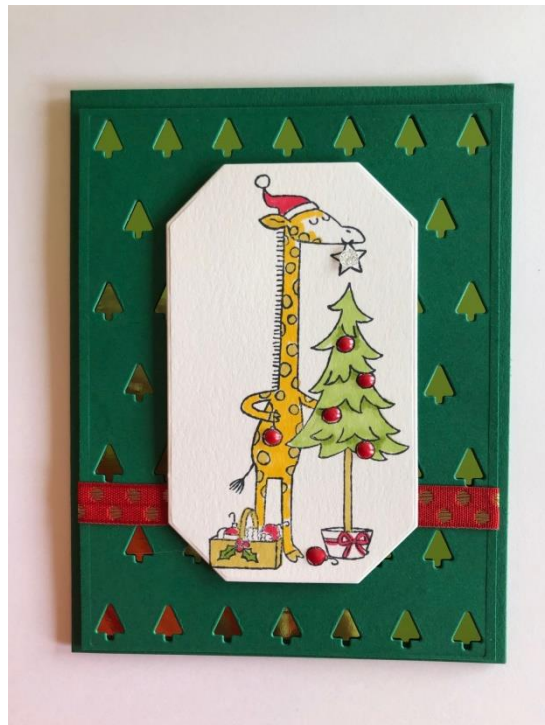


Festive & Fun Giraffe



All images © Stampin' Up!®

Stampin' Up! Supplies:

- Stamps – Festive & Fun (162078)
- Cardstock – Shaded Spruce (146981), Basic White (159276), Melon Mambo & Granny Apple Green Foil Sheets (161953)
- Ink – Memento (132708), Versamark (102283)
- Misc. – Countryside Corners Dies (161471), Pearlized Enamel Effects Basics (156310), Tiny Christmas Trees die (162114), Real Red & Gold Dotted Ribbon (162353), Adhesive-backed Glitter Sequins (162029), Stampin Cut & Emboss Machine (149653), Multipurpose Liquid Glue (110755), Stampin' Dimensionals (104430), Mini Glue Dots (103683), Tear & Tape Adhesive (154031), Basics Stampin Emboss Powder (155554),
- Blends ~ Wild Wheat (161661), Daffodil Delight (154883), Granny Apple Green (154885), Real Red (154899)

Cutting & Scoring:

- Shaded Spruce – 5 ½" x 8 ½", score at 4 ¼", 4" x 5 ¼"
- Real Red – 4" x 5 ¼"
- Foil ~ 3 7/8" x 5 1/8"
- Basic White ~ 3" x 4 ¼"
- Ribbon ~ 6"

Instructions:

1. Die cut trees on the single Shaded Spruce piece.
2. Adhere foil to base card.
3. Add Tear & Tape to the ribbon, adhere between the second and third row of trees from the bottom taping it to the back of this piece.
4. Adhere this piece (die cut trees) to the base card using Mini Glue Dots.

5. Stamp the giraffe on Basic White and color with the blends. The giraffe is colored Daffodil Delight with spots of Wild Wheat.
6. Add Real Red enamel effects to the ornaments, **let dry** (approximately 15 minutes). Add one clear glitter sequin to the star.
7. Emboss the sentiment and the cute beaver with white embossing powder on the Real Red cardstock. Add green glitter sequins on each side of the 'Happy Christmas Wishes'.
8. Once the red enamel is dry and hard, add this piece to the base card using Dimensionals.

